



ABCTODAY SCHOOLS

A COMMUNITY COLLECTIVE IMPACT MODEL

Date

WHO WE ARE

Purpose: Partner with young people in their pursuit of a meaningful, stable, and independent life

Relationship organization serving children ages 5 -25 years old- urban, suburban and rural markets

Integrated programs/services empowers 10,000+ youth in partnership with 4,000 parents and volunteers, three (3) school districts and 100+ community partners.

- One-to-One Mentoring
- Group Mentoring
- ABCToday Schools
- First Job
- Systems Navigation + Direct Aid
- Big Futures

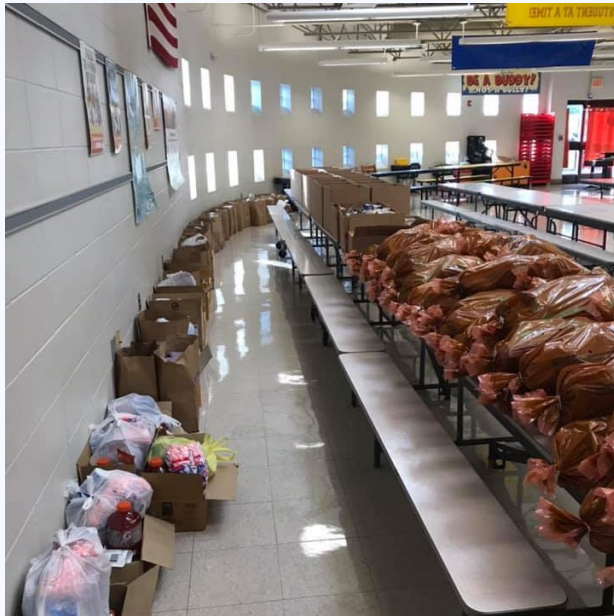
ABCTODAY COMPONENTS

- ABCToday Network
 - Each school is supported by a network of community partners responsible for leading responses to student data
- ABCToday Data
 - Each quarter school districts electronically transfer data to BBBSEMO for organizing
- ABCToday Cycle
 - Celebrate, Clarify and Customize

WHAT THIS LOOKS LIKE THROUGHOUT THE SCHOOL YEAR

- Each ABCToday Network meets 4 times a year
 - Kick off meeting at the beginning of the year to set strategy and priorities
 - Each quarter afterward to review all school data and make decisions
- Focus on Celebrating students and Schools for successes first
 - Ex: Letters to parents and students for Student of the Month awards, Rewards for improvement in attendance, recognition at school assemblies
- Work with schools to develop strategies to impact student performance with an emphasis on positive school culture and attendance
 - Ex: Attendance challenges, career fairs, book drives, etc.
- Constant engagement and communication with school partners to support schools

EXAMPLES OF COMMUNITY PARTNERSHIPS AT WORK IN ABC TODAY'S SCHOOLS



FOOD DISTRIBUTION
DURING PANDEMIC



INDIVIDUAL STUDENT
CELEBRATIONS



ATTENDANCE
RECOGNITION

SERVICES PROVIDED BY BBBSEMO TO SCHOOLS

1. Mentoring- both 1:1 and group mentoring
2. Intensive supports for students
3. Navigation and direct aid

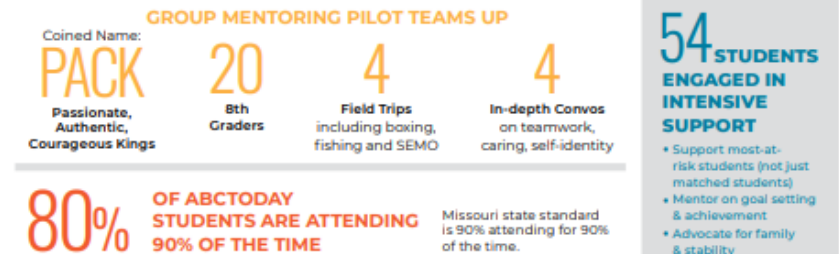
CURRENT OUTCOMES



2020-2021 SCHOOL YEAR REPORT CARD

As COVID continued to challenge our schools and students, we focused on investing in long-term and life-changing solutions. BBBSEMO continued to deliver on our historic ABCToday program to improve student outcomes in **ABC's Attendance, Behavior and Course Performance** (reading and math).

To really focus on boys' needs, we created a new group mentoring program called PACK (Passionate, Authentic, Courageous Kings). This model made it possible for 20 middle school boys to be immersed in mentoring relationships designed to expand their horizons and promote growth. In fact, 18 of the boys joining the PACK were on the agency's existing waiting list. Our work in ABCToday Schools is critical. We have the ability to expand and respond to the immediate needs of youth and families by delivering high-quality, evidenced-based mentoring in all school districts including RURAL and URBAN.



Early warning indicators are defined as missing fewer than 16 days of school, excused or unexcused; recording no more than four discipline referrals or serious infractions, and earning an A, B, or C in reading and math.

NAMED BY JOHNS HOPKINS UNIVERSITY, CIVIC ENTERPRISES AND AMERICAN ASSOCIATION OF STATE COLLEGES AND UNIVERSITIES AS A

NATIONAL BEST PRACTICE

STAFF CONTACT INFORMATION



ASHLEY SEILER
BIG BROTHERS BIG SISTERS OF
EASTERN MISSOURI
CHIEF PARTNERSHIP OFFICER
ASEILER@BBBSEMO.ORG