

May 10, 2023

Building Student Success Ecosystems



Philadelphia
Education 
Fund

Philadelphia Education Fund (PEF)

- Farah Jimenez

President and CEO



- Ellen Ridyard

Director, Collaborations and Partnerships





1992



1995



2006

Pharma company pledges \$10 million to Philly students to help diversify STEM careers

Black workers make up 12% of the United States' workforce, but hold 5% of science and engineering jobs, according to the National Science Foundation.

By Miles Bryan - August 12, 2020



GlaxoSmithKline headquarters at the Navy Yard in Philadelphia. (AP Photo/Matt Rourke)

The pharmaceutical company GlaxoSmithKline pledged Wednesday to donate \$10 million over the next decade to help Black, Latino, and female students in Philadelphia pursue careers in science, technology, engineering, and math.

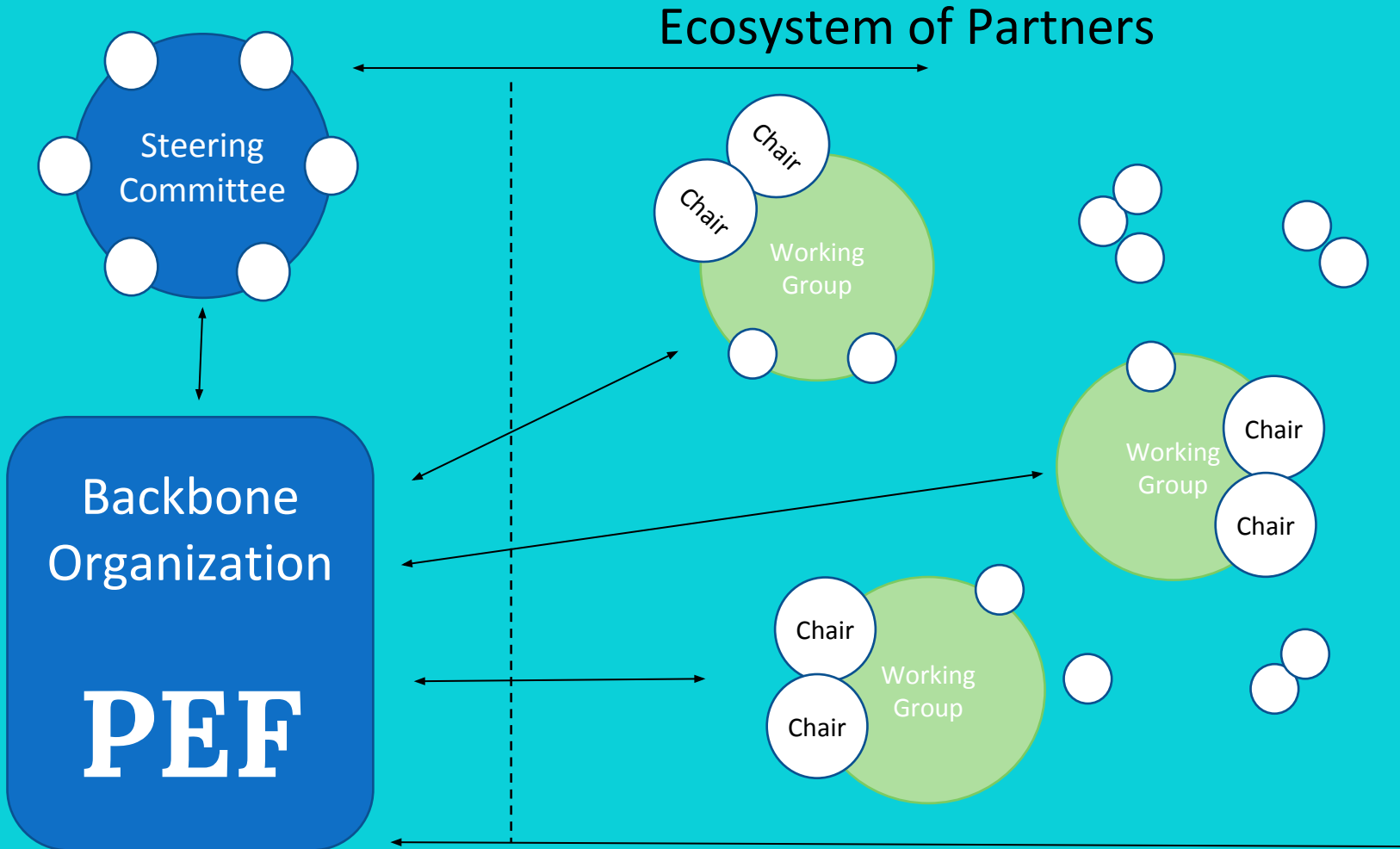
The grant will be channeled through the newly-announced [Philadelphia STEM Equity Collective](#), a collaboration between GSK, the School District of Philadelphia, local universities and museums, and dozens of nonprofits. The more than sixty organizations that are part of the collective will be able to apply for funding to pay for things like after-school programming and outreach.

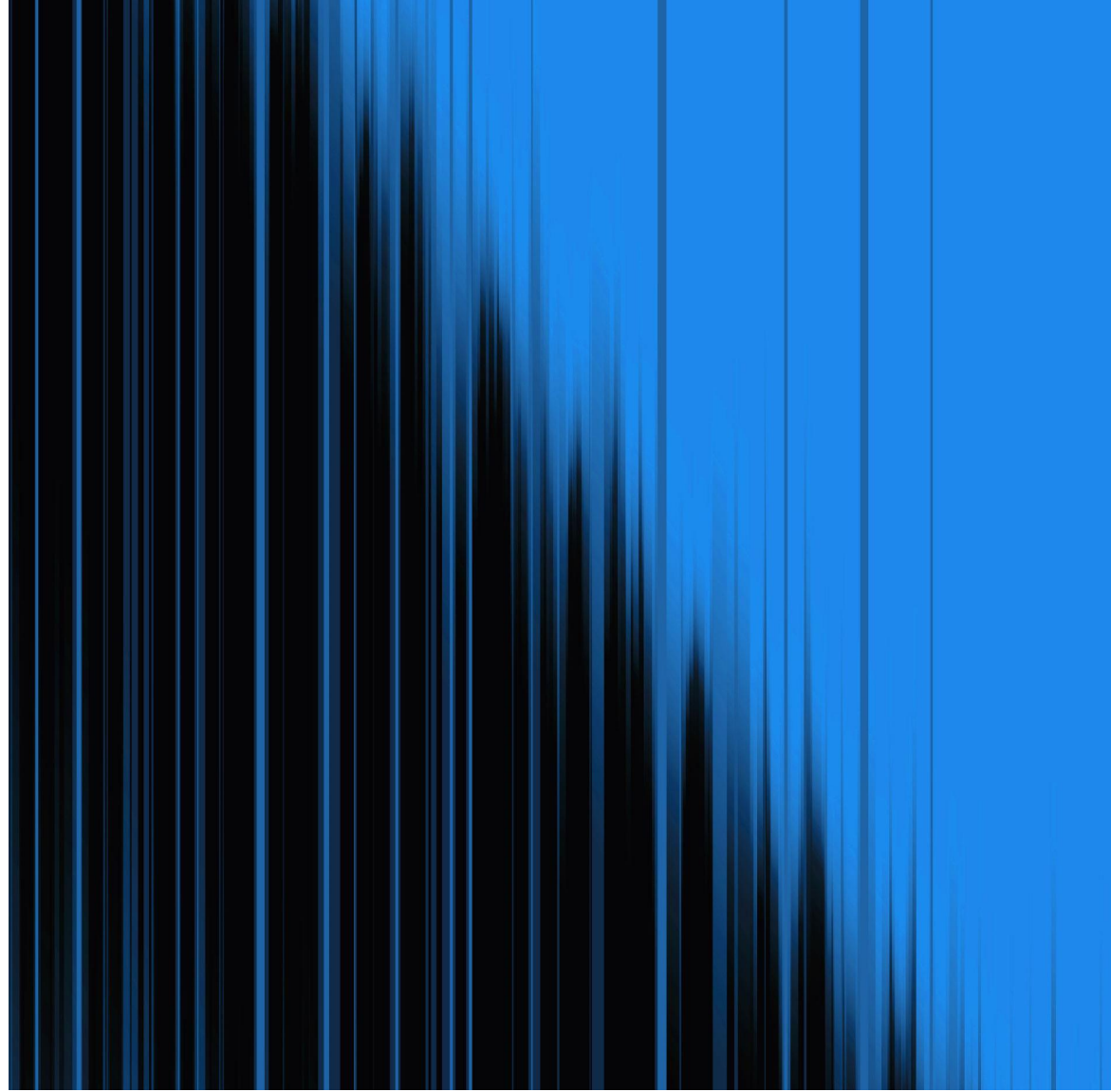
for funding to pay for things like after-school programming and outreach.

Collective Impact Expansion



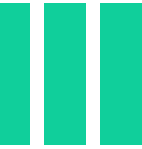
Ecosystem Collective Impact Model





College Access and Success Ecosystem

Philadelphia
Education 
Fund



CASE Strategy and Impact

Proposed Workgroups and Suggested Measures

- **Financial Access** –% of 12th grade students who have completed the FAFSA/state financial aid applications
- **Postsecondary Application** -% of 12th grade students who have submitted applications to a credentialing postsecondary institution
- **On-Time High School Graduation** -% of students graduating high school on time
- **Postsecondary Enrollment & Persistence** -% of graduates enrolled in a credentialing postsecondary program including 4 year schools, 2 year schools and technical schools

PITCH

- PEF met with a group convened by the School District of Philadelphia (SDP)'s Chief Academic Officer, and including representatives from College Readiness, Career and Technical Education and Research and Evaluations to envision a collective approach to supporting the District's College Readiness goals

FUND

- PEF secured a grant from the William Penn Foundation to fund the launch of the college access and success ecosystem, including hiring the backbone staffing

PLAN

- Currently, PEF is working to plan the planning by convening industry leaders in early May to discuss history, tools, membership, and calendar for the ecosystem launch

COLLEGE ACCESS AND SUCCESS ECOSYSTEM

Philadelphia Education Fund (PEF)

- Farah Jimenez

President and CEO



- Ellen Ridyard

Director, Collaborations and Partnerships

