

College Choice Pulse Check

- If you went to college, how did you decide which college to attend? Did you make the right choice?
- If you did not go to college, why not? Did you make the right choice?

College Choice Pulse Check



How many people chose their college based on...

simple math?

following friends or family traditions?

a specific major or degree offered?

playing a sport or fandom for a specific team?

other?



Match and Fit in the College Transition Process

Pathways for Adult Success Conference

May 2023



Vision

Atlanta is a city where race and income no longer predict postsecondary success and upward mobility

Mission

Achieve Atlanta's mission is to help APS students access, afford, and earn postsecondary credentials

Achieve Atlanta builds cross-sector collaboration across a range of partners.

Grades 11-12

Postsecondary

Improve Postsecondary
Access

Improve Postsecondary
Affordability

Increase Postsecondary
Success

Achieve Atlanta catalyzes and facilitates results-driven cross-sector collaboration by setting the vision, assembling teams, and creating conditions for success



Provide college advising to help students identify and access chosen postsecondary education



Help students understand the benefits and value of postsecondary education and help them pay for it through scholarships



10 Higher Education Institutions



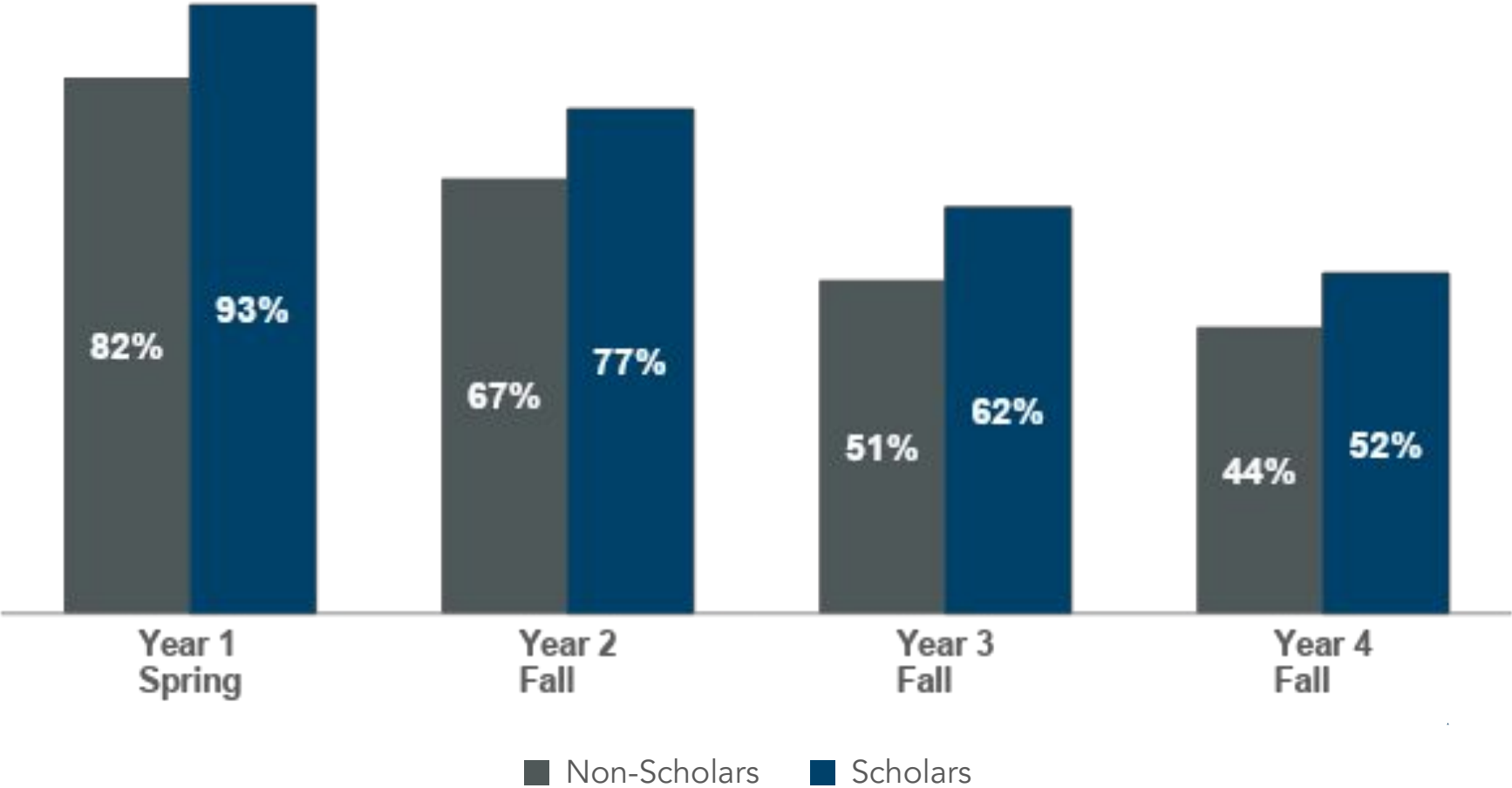
Provide supports to help students persist and complete degrees



Achieve Atlanta engages students and families to ensure their experience and feedback inform how supports and services are provided and improved

Our recent external evaluation showed that AATL Scholars persist well above similar non-Scholar APS graduates who enroll in college. These gains last throughout four years.

College Persistence By Year/Term

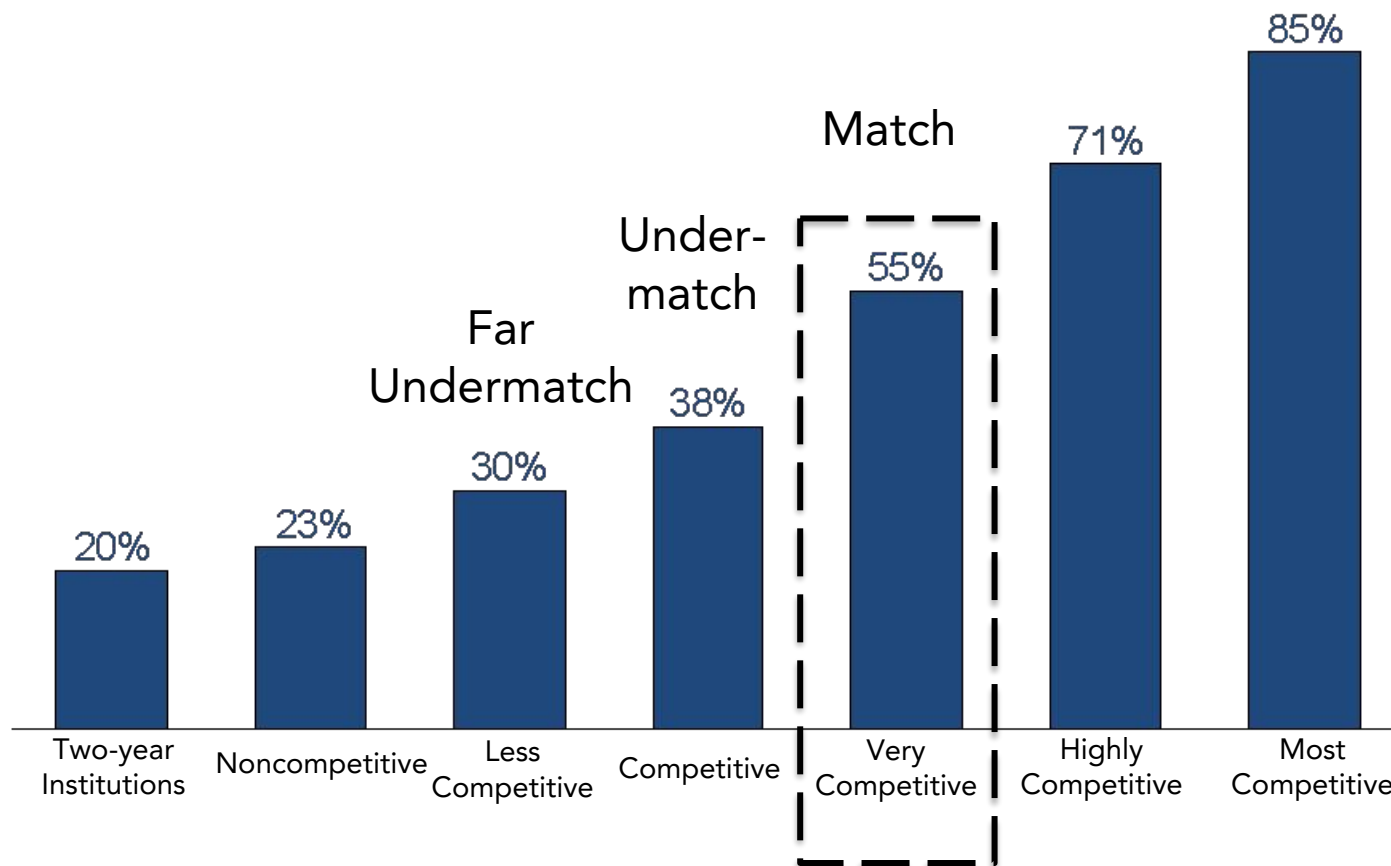


College persistence as reported from the National Student Clearinghouse. Retention of AATL Scholarship is not considered; solely whether the student remained enrolled or earned a credential.

Our Match and Fit Journey

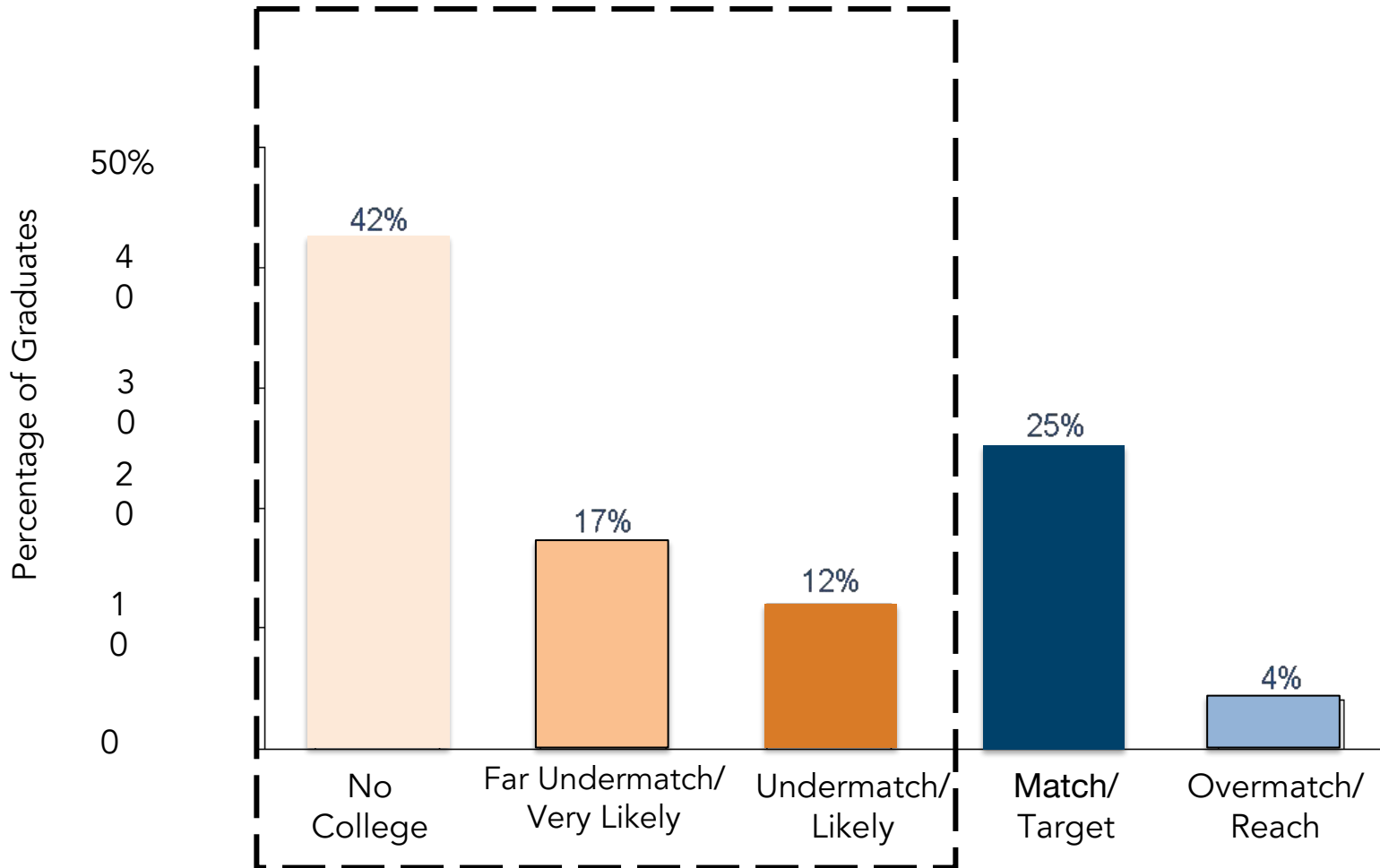
Undermatching means, on average, attending a school with a lower graduation rate.

Average six-year African American/Hispanic Graduation Rate by Selectivity Category

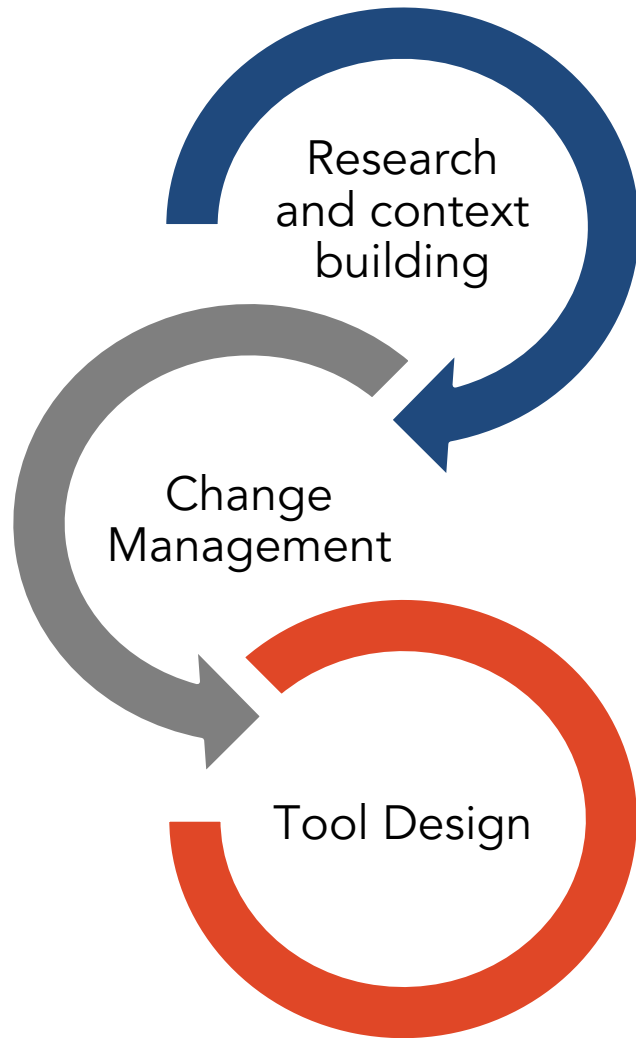


Our analysis found a large share of APS graduates were undermatching.

Percentage of APS Graduates Who Attend Institutions That Match Their Qualifications

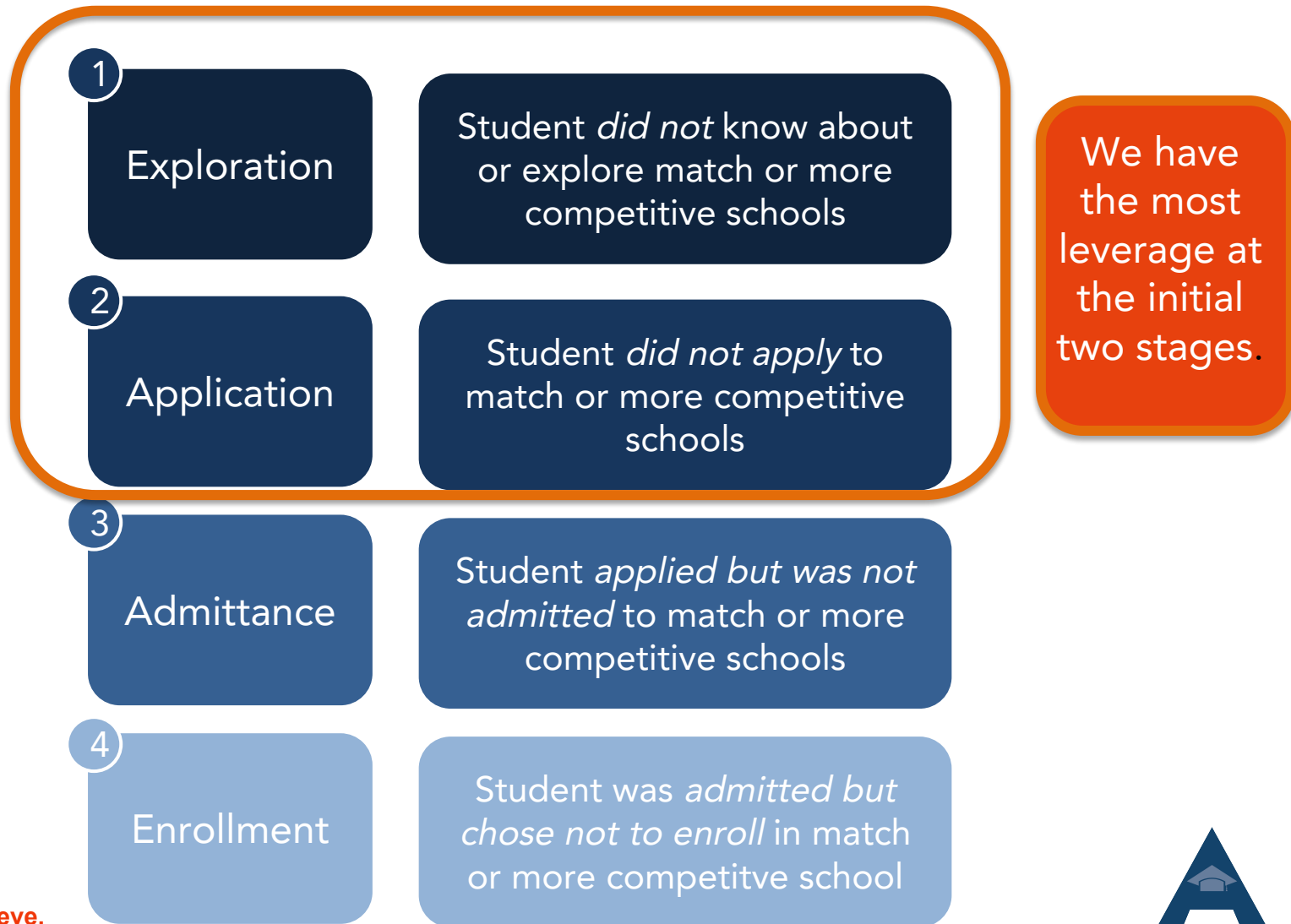


Our process to scaling Match and Fit advising in APS



- Field scan of match & fit practices, tools
- APS postsecondary match historical analysis and focus groups
- Workshops for key district and partner stakeholders
- School-team root cause analysis with their own match data
- Ambassadors “championing” the need for change
- **Multiple rounds of design-feedback-redesign**
- **Student testing for user interface and simplicity**

Stakeholders helped us identify intervention points to influence the college enrollment trajectory



MATCH & FIT

LIST BUILDER

A Partnership Between Achieve Atlanta and Atlanta Public Schools



<https://youtu.be/rE7tUNequ2w>

Things to know about the Match & Fit List Builder...



College list-building tool to support students in their initial college search process; allow students to own the first step and *build a balanced list*.



Student's academic data automatically pulled in from Infinite Campus/College Board/ACT – reducing errors and search time.



Specific to Atlanta Public Schools' students – historical APS enrollment and persistence data; USG test score requirements.



Counselors, CAC Advisers, OneGoal PDs and students have **tested the tool** and provided feedback to make it simple and useful.



Helps students own the college search process and start earlier! **Saving counselors, advisers time** and allowing them to improve their craft.

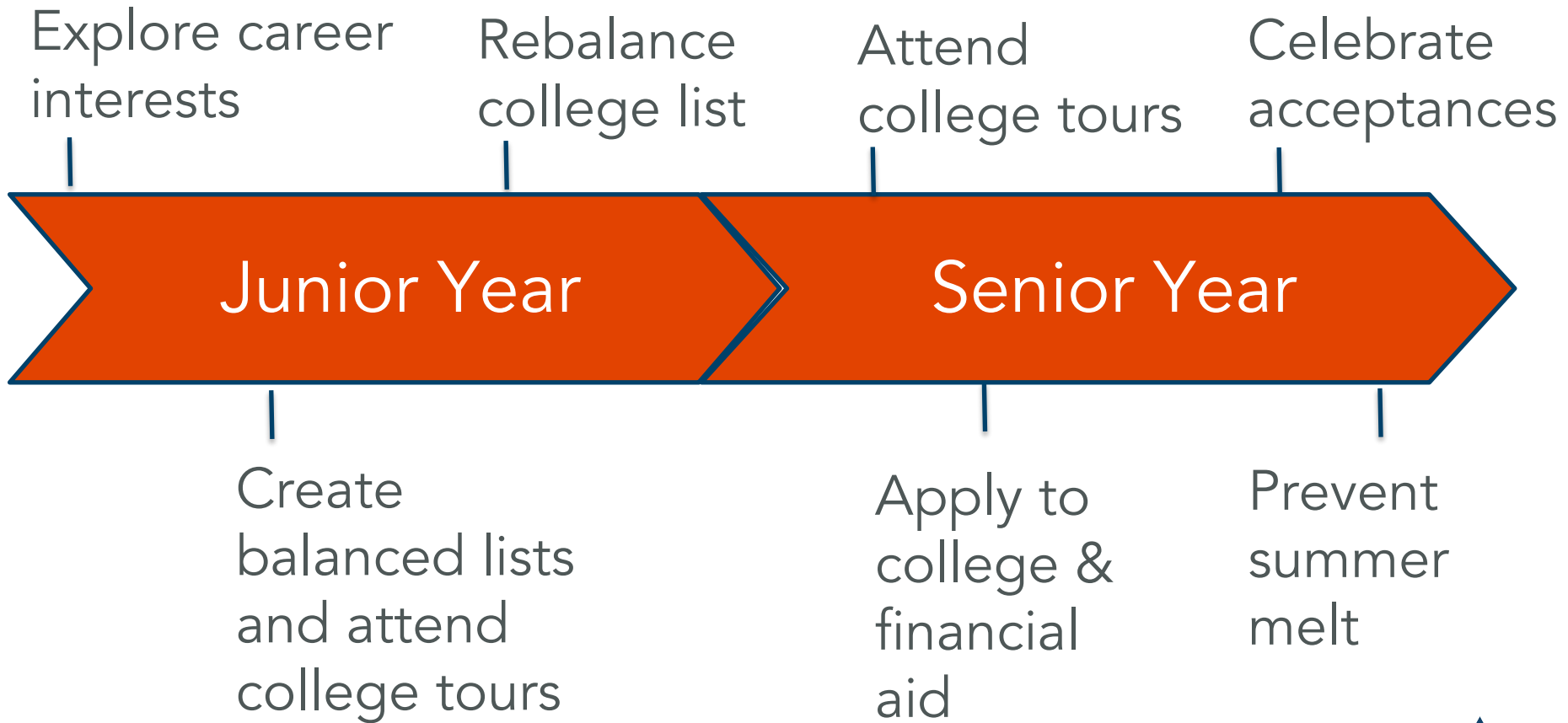
The background consists of several overlapping triangles in various shades of blue, creating a geometric pattern. The triangles are arranged in a way that they appear to be layered, with some pointing upwards and others downwards, creating a sense of depth and movement.

Match and Fit Advising and Support

The implementation of the MFLB highlighted other necessary supports.

- Adults need more guidance on how to have effective match and fit conversations with students.
- Students and families need more support reading and understanding their financial aid offer letters.
- School staff should use the tool to make sure the right schools are in front of students.

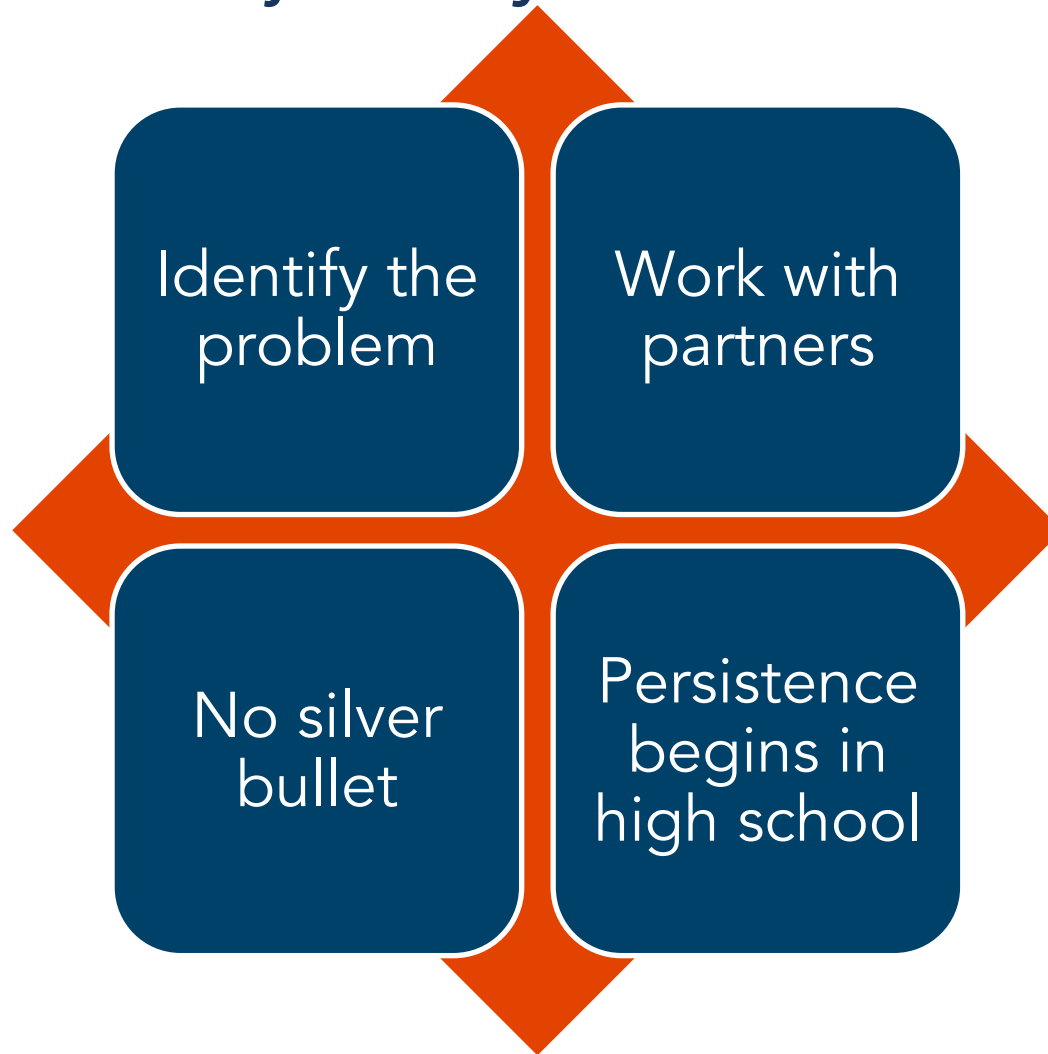
Our efforts help students in junior and senior year with their college enrollment decisions...



...and continue as they enroll and persist through college.

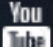

- Campus Ambassadors support building a community of belonging
- Official scholarship and persistence support through postsecondary and nonprofit partners
- Professional development for opportunities during and after college
- Basic needs assistance to support persistence

We have four key lessons learned from our match and fit journey.



Follow Us Online

  @AchieveAtlanta

  Achieve Atlanta

 /AchieveAtlanta



Contact me



Femi Johnson

Achieve Atlanta

Director, College Access

fjohnson@achieveatlanta.org

