

STUDENT SUPPORT SYSTEMS FOR POSTSECONDARY PERSISTENCE AND SUCCESS

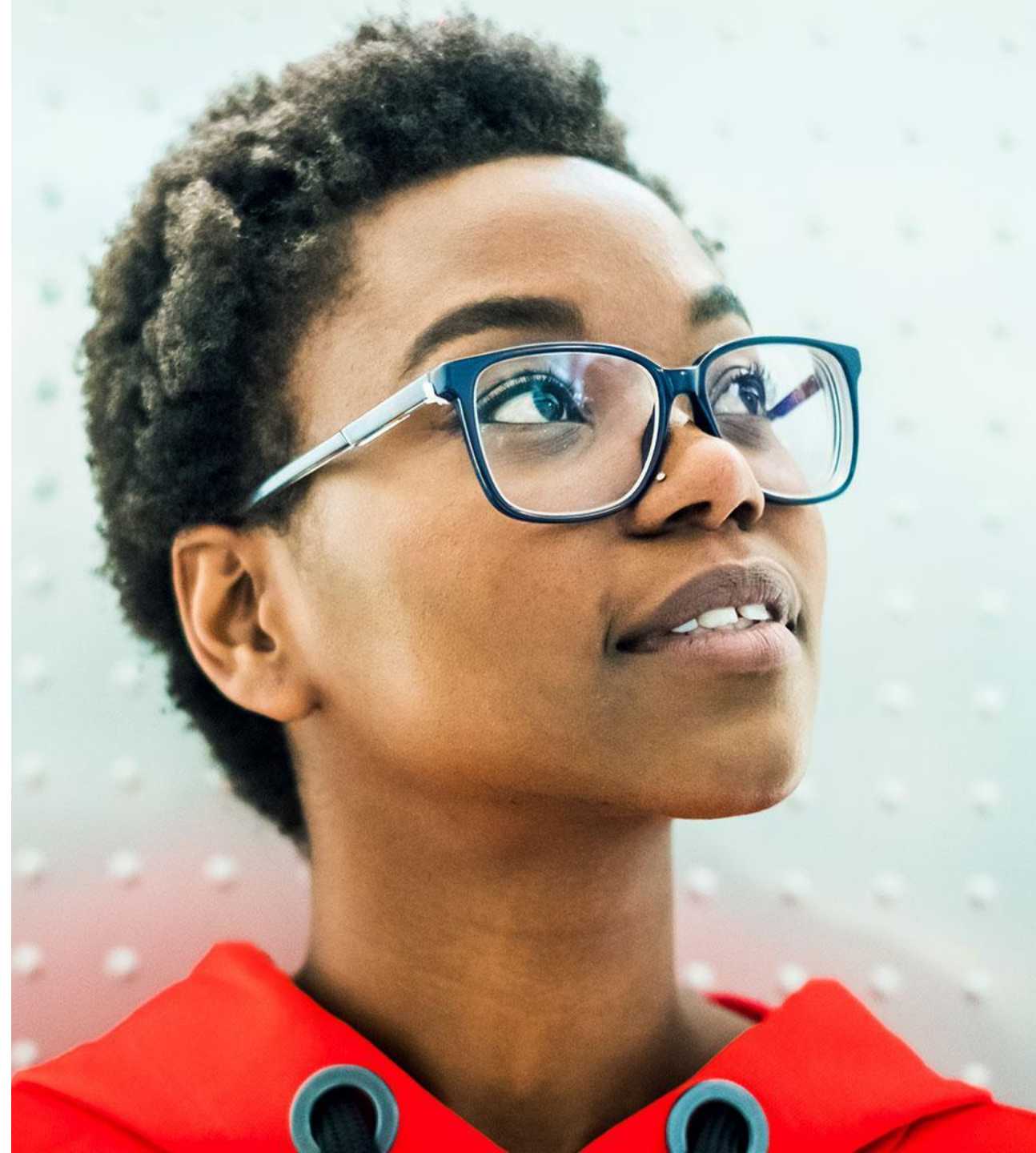


Pathways to Adult Success Spring Conference | May 10, 2023

ALL YOU NEED TO KNOW
ABOUT JFF

The American labor market is broken. Our rapidly changing economy demands skilled and adaptable workers, but many people lack the education and training employers require. JFF is transforming the workforce and education systems to accelerate economic advancement for all.

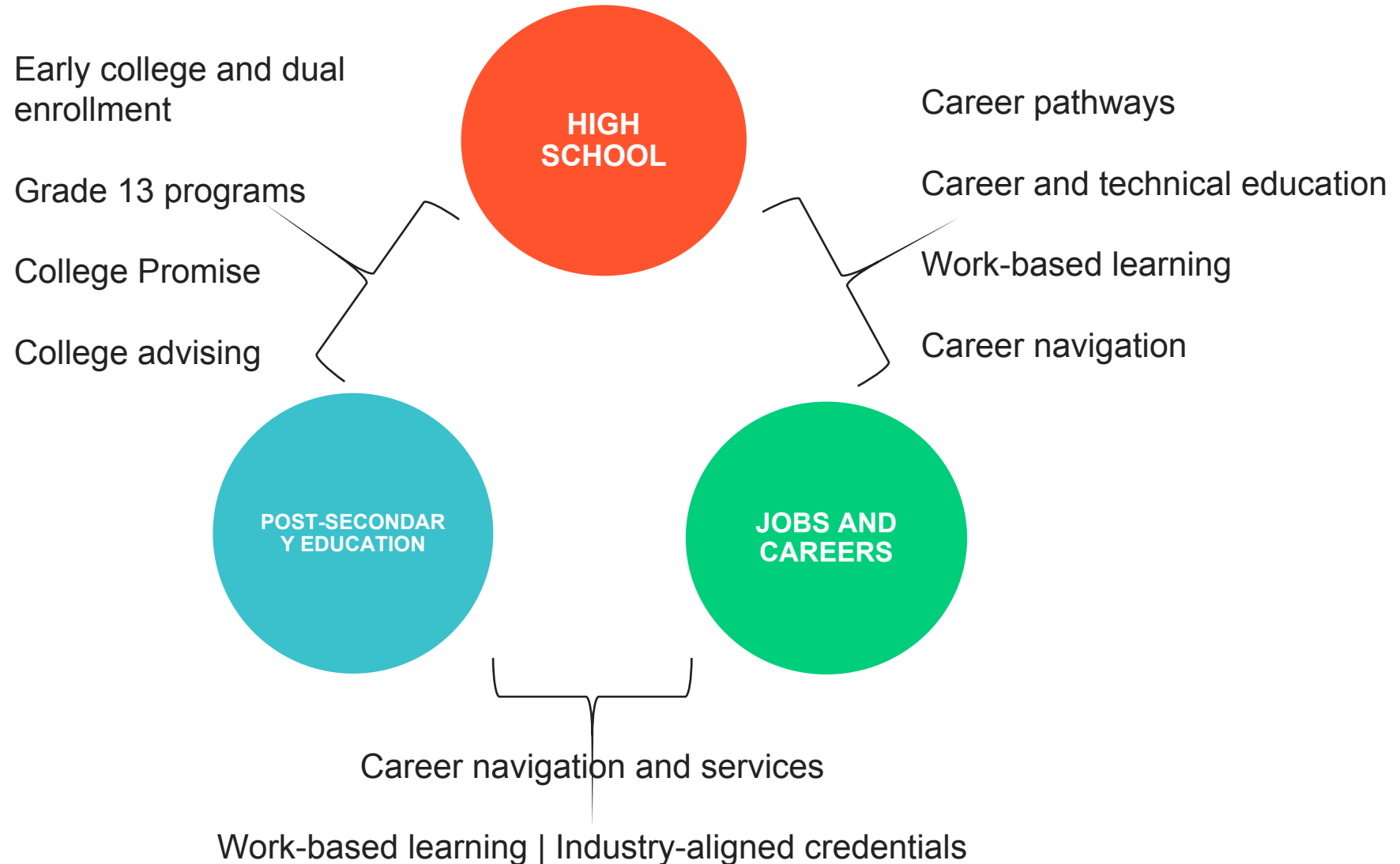
JFF designs innovative solutions, scales proven programs, and influences industry action and policymaking to drive the most transformative impact.



The Big Blur

An Argument for Erasing the Boundaries Between High School, College, and Careers—and Creating One New System That Works for Everyone

WE'VE BEEN TRYING TO IMPROVE TRANSITIONS FOR A LONG TIME



The Big Blur



FREE FOR STUDENTS

**GUIDED PATHWAYS
MODEL**

**INTEGRATED
WORK-BASED
LEARNING
EXPERIENCES**

**ACADEMIC AND
CAREER NAVIGATION**

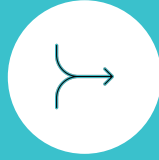
**WRAPAROUND
SUPPORTS**



INCENTIVES

State accountability systems emphasize **metrics of success** for cohorts of students in grades 11-14

Pool funding streams for students in grades 11-14



ALIGNMENT

11th graders enter **new institutional structures** incorporating high school and college requirements designed for career preparation and incorporating work experience



GOVERNANCE

A **senior leader** with decision making authority oversees, ensures funding for, and supports unified grades 11-14 institutional structures

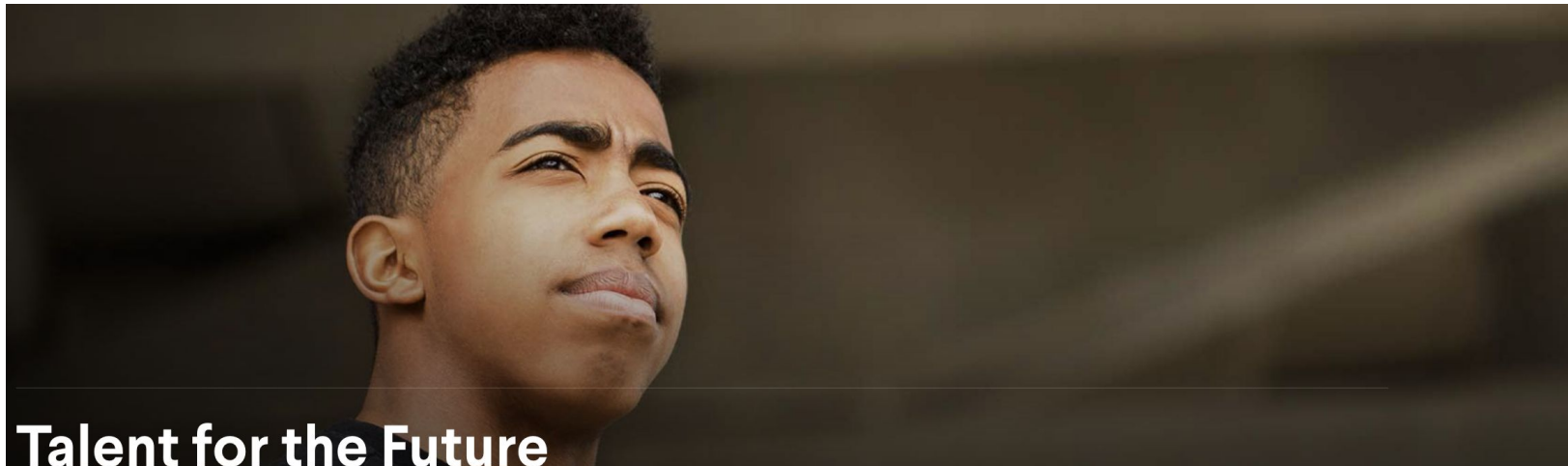


STAFFING

Specially trained educators and leaders are equipped to teach, curate and organize learning and work experiences and support systems for students in grades 11-14.

Back on Track Pathways

JFF's Back on Track pathways contain specific components drawn from best practices, yet they are flexible enough to guide pathway development across a wide range of contexts. Each pathway is organized around distinct, supportive phases, delivered through partnerships, that help young adults develop the skills they need to move along a path to career advancement and economic mobility.



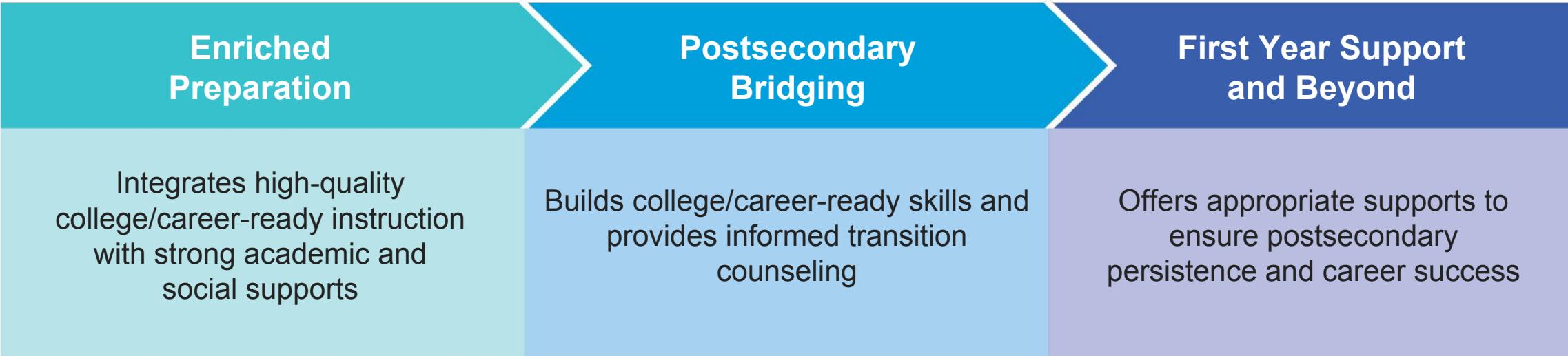


Back on Track Postsecondary Success Model

- This pathway helps youth and young adults prepare for and transition into degree-granting postsecondary programs of study.
- 9 city SIF Opportunity Works Demonstration
- 6 LEAP communities under Annie E. Casey Foundation's SIF
- 12 Texas district schools, charters and cbos



Back on Track: Postsecondary Success

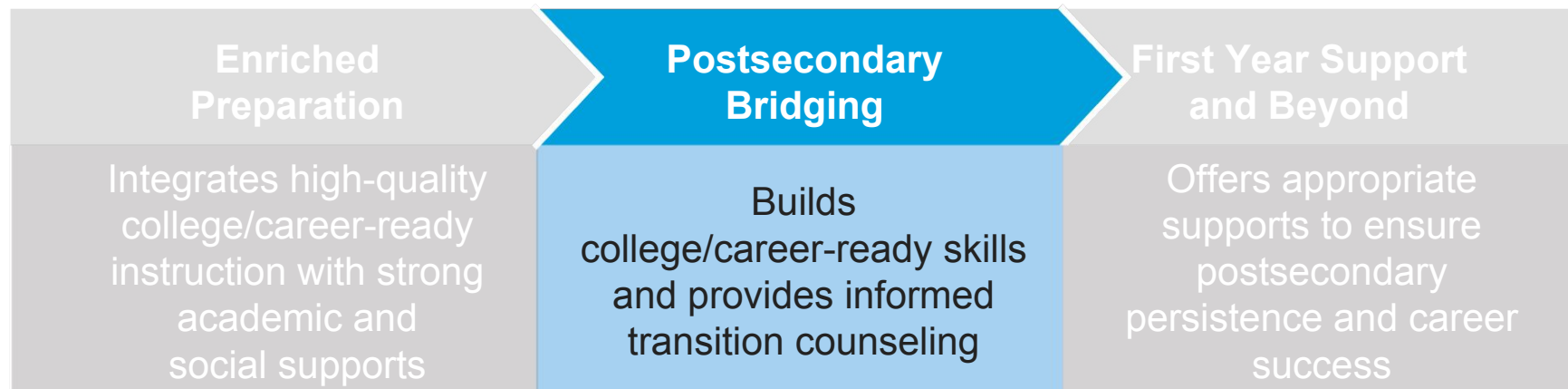


Phase One: Enriched Preparation



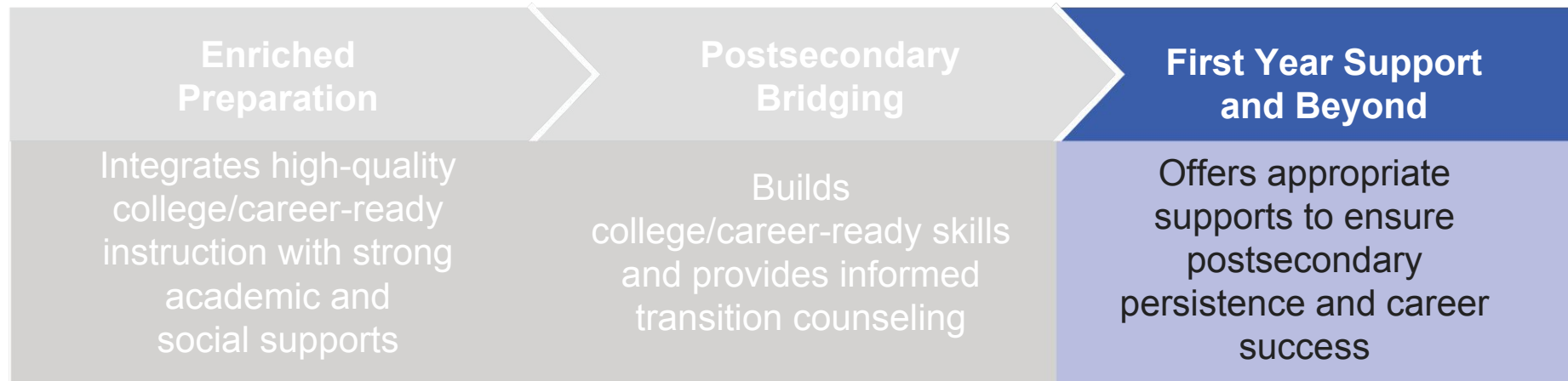
- College- and Career-Ready Culture
- College- and Career-Ready Curriculum and Instruction
- Intentional Use of Time, Technology, and Assessment to Customize Instruction and Accelerate Learning
- Personalized Guidance and Support

Phase Two: Postsecondary Bridging



- **Supported Dual Enrollment/First Technical Courses**
- **Personalized Guidance on Connection to Best Bets**
- **A Focus on College Knowledge and Success Strategies, and Employment Readiness**

Phase Three: First Year Support and Beyond



- **Support for Students to Earn Credits Predictive of Completion**
- **Just-in-Time Support to Ensure Persistence**
- **Building Attachment to Postsecondary Education and Careers**

A FEW BEST PRACTICES FROM BACK ON TRACK IMPLEMENTORS

Individual and cohort-based programming

Near peer supports

Habits of mind and college academic readiness

Finding yourself in the institution

Agency and autonomy

No wrong doors

student-centered navigation tools

Creative use of incentives

Dual enrollment

On and off ramps

Dedicated transition staff

Measuring what matters

PUTTING IT ALL TOGETHER



Key Questions to Consider

What structures, strategies, practices and relationships help build momentum for students along their postsecondary success journey?